

วาดเส้นเบื้องต้น

สัปดาห์ที่ 1 : ทำความรู้จักกับงานวาดเส้น

แยกตามรูปปรากฏเบื้องต้นเป็น 3 ประเภท

วาดเส้นแบบเหมือนจริง



Raphael,
Head of a Young Apostle, 1519-20.
Black chalk,
38 x 28 cm.

Sold at Sotheby's,
December 5, 2012,
for \$47.8 million, a new record for a drawing sold at auction.

วาดเส้นแบบเหมือนจริง



John Singer Sargent, 1856

Mrs. George Swinton
charcoal on white paper



Richard Romeo



Michelangelo di Lodovico Buonarroti Simoni, 1475

Study for Adam, 1511, red chalk

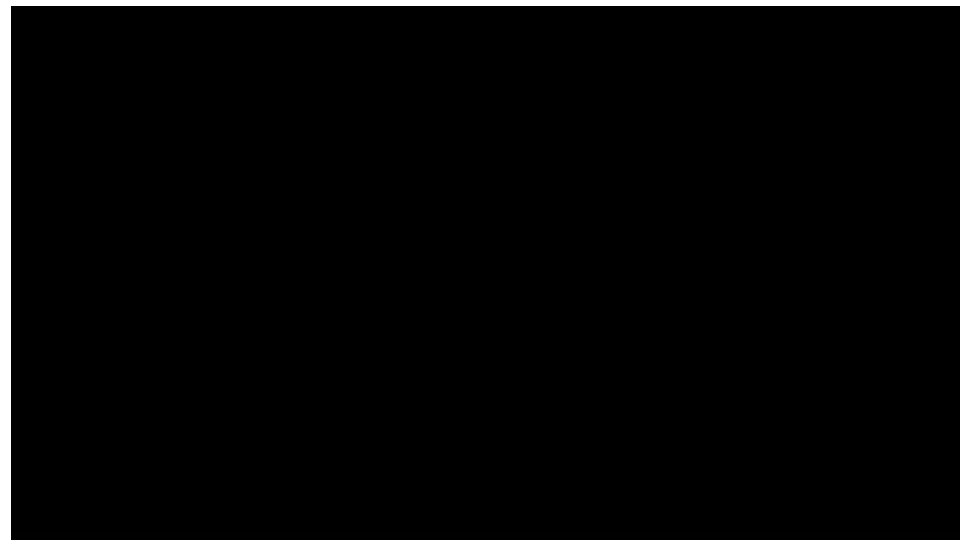
(Drawing from a live model)

วาดเส้นแบบเหมือนจริง : Hyperrealistic

Pau Cadden, 1964
Pencil on Paper



Kelvin Okafor, 1986

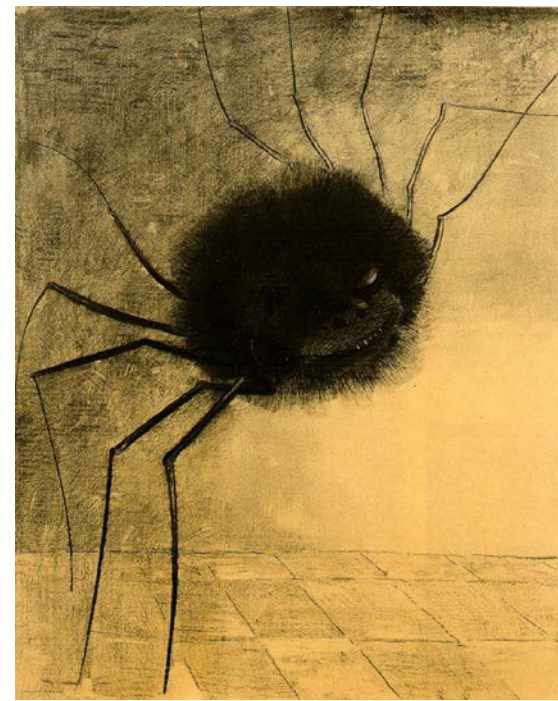


วาดเส้นแบบดัดแปลง

Odilon Redon, 1840

The Smiling Spider, 1881

Charcoal, 49.5 x 39 cm Musee du Louvre, Paris



Egon Schiele

Osen with fingertips laid together, 1910

Leopold Museum, Privatstiftung, Wien

Willem de Kooning, "Untitled" (1966).

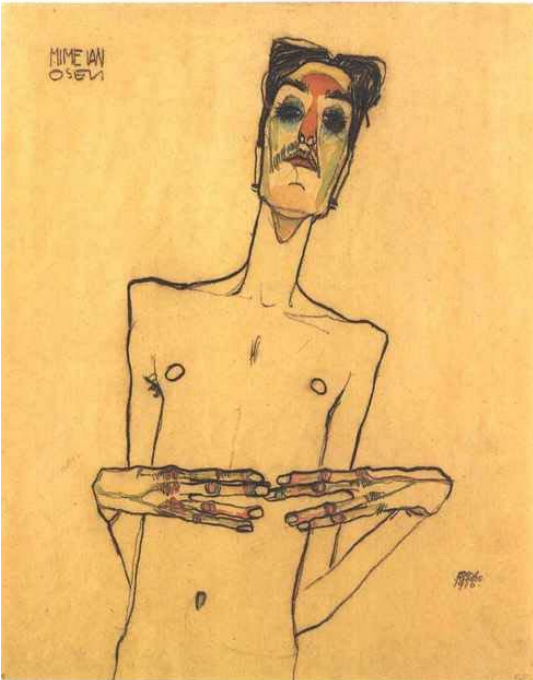
Charcoal on paper, 10 x 8 inches.

Museum of Modern Art, New York

Pablo Picasso

Weeping Woman 1937, Oil on canvas

60 cm x 49 cm Tate Gallery, Liverpool, UK



วาดเส้นจากความคิด

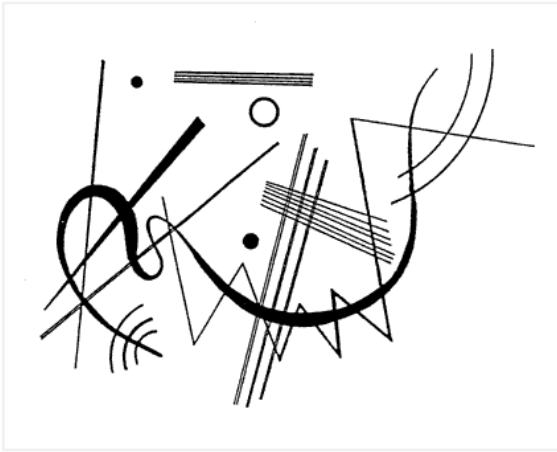
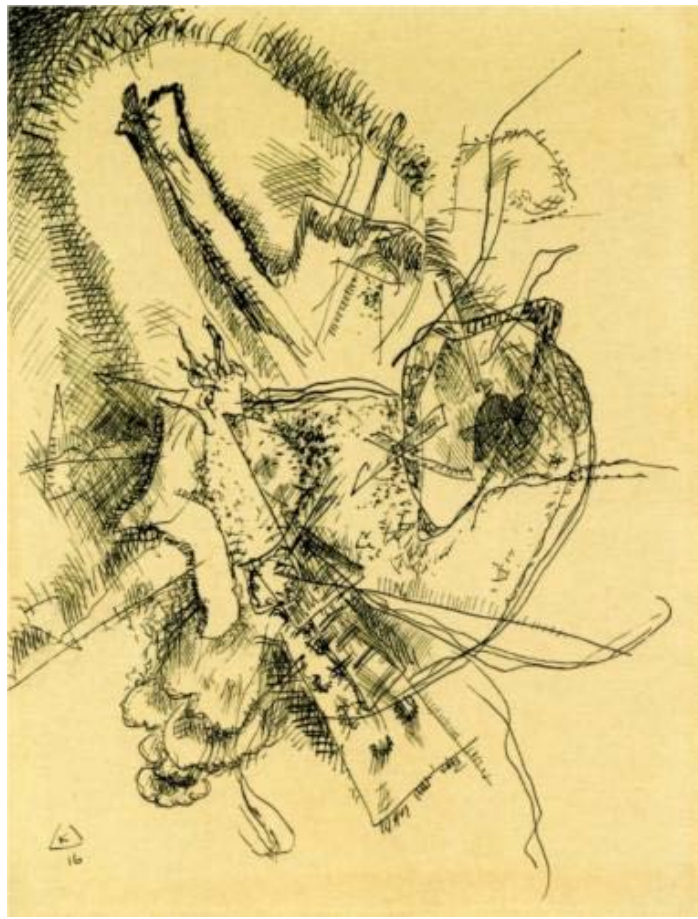
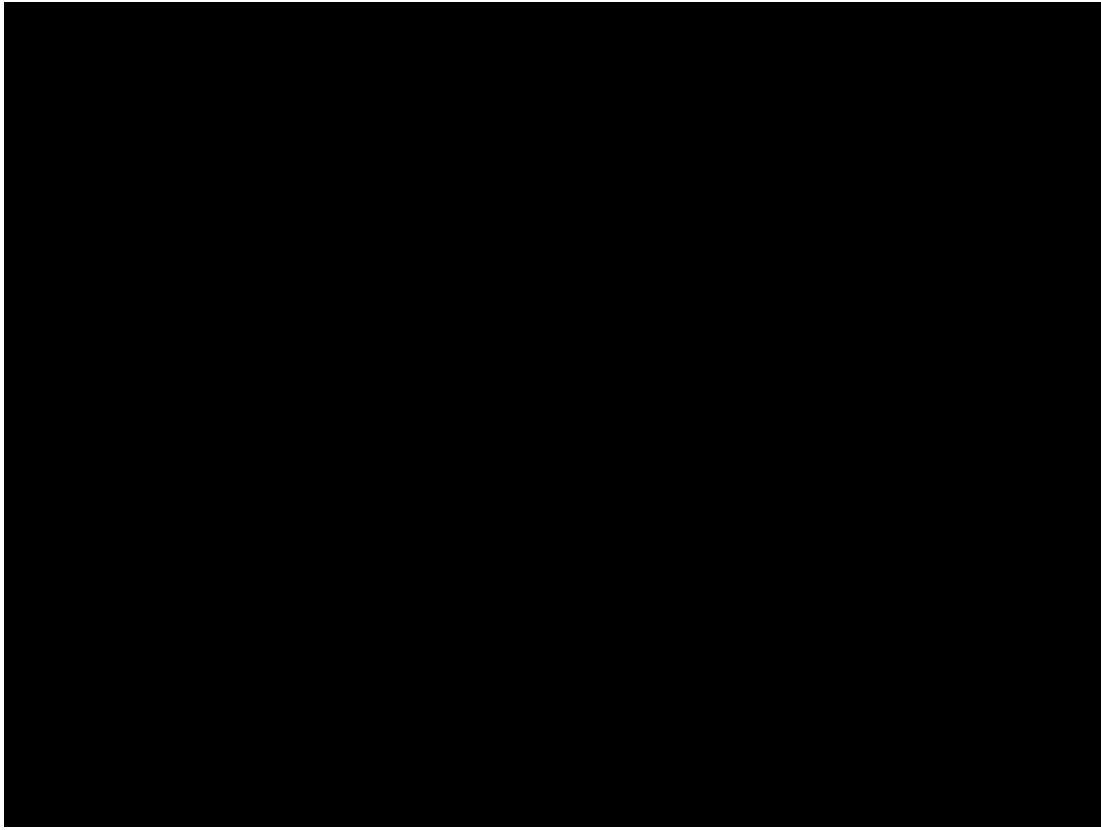


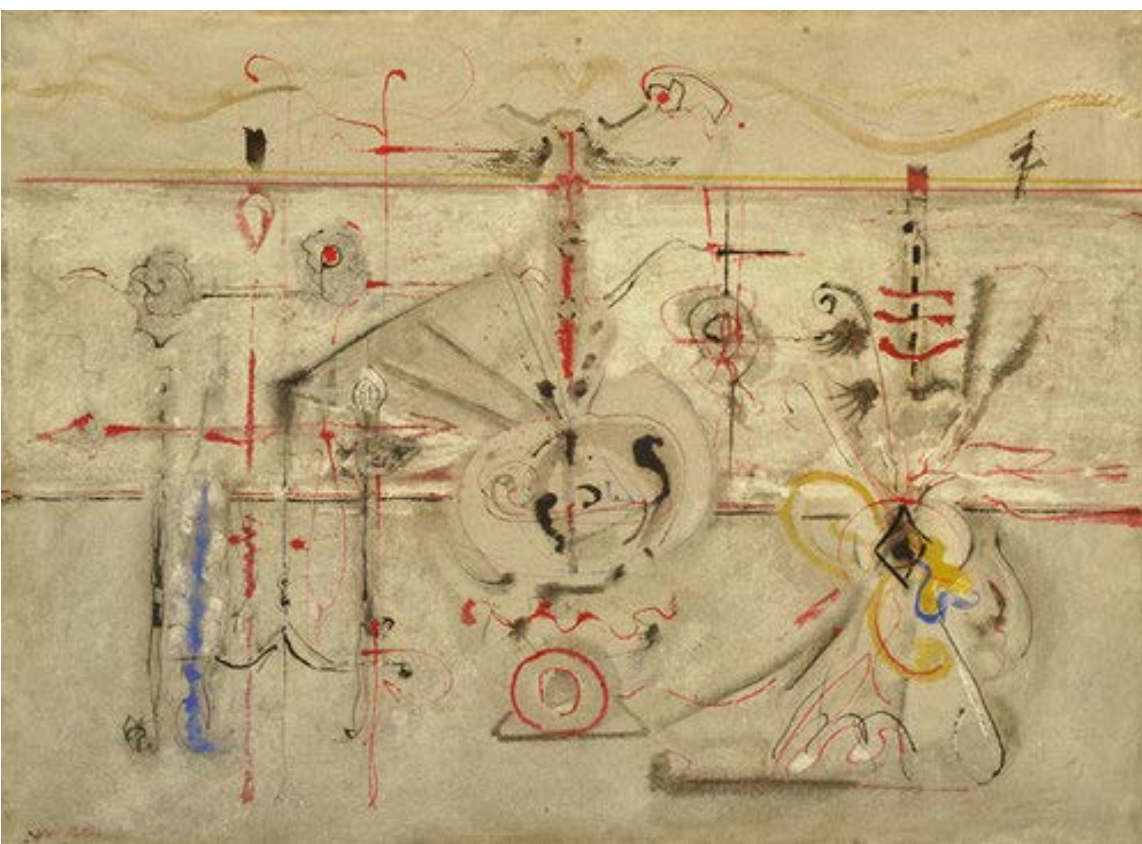
Illustration from Kandinsky's Point and Line to Plane



Vasily Kandinsky
1916
Ink, 24.8 x 19 cm

Kandinsky Drawing, 1926

วาดเส้นจากความคิด

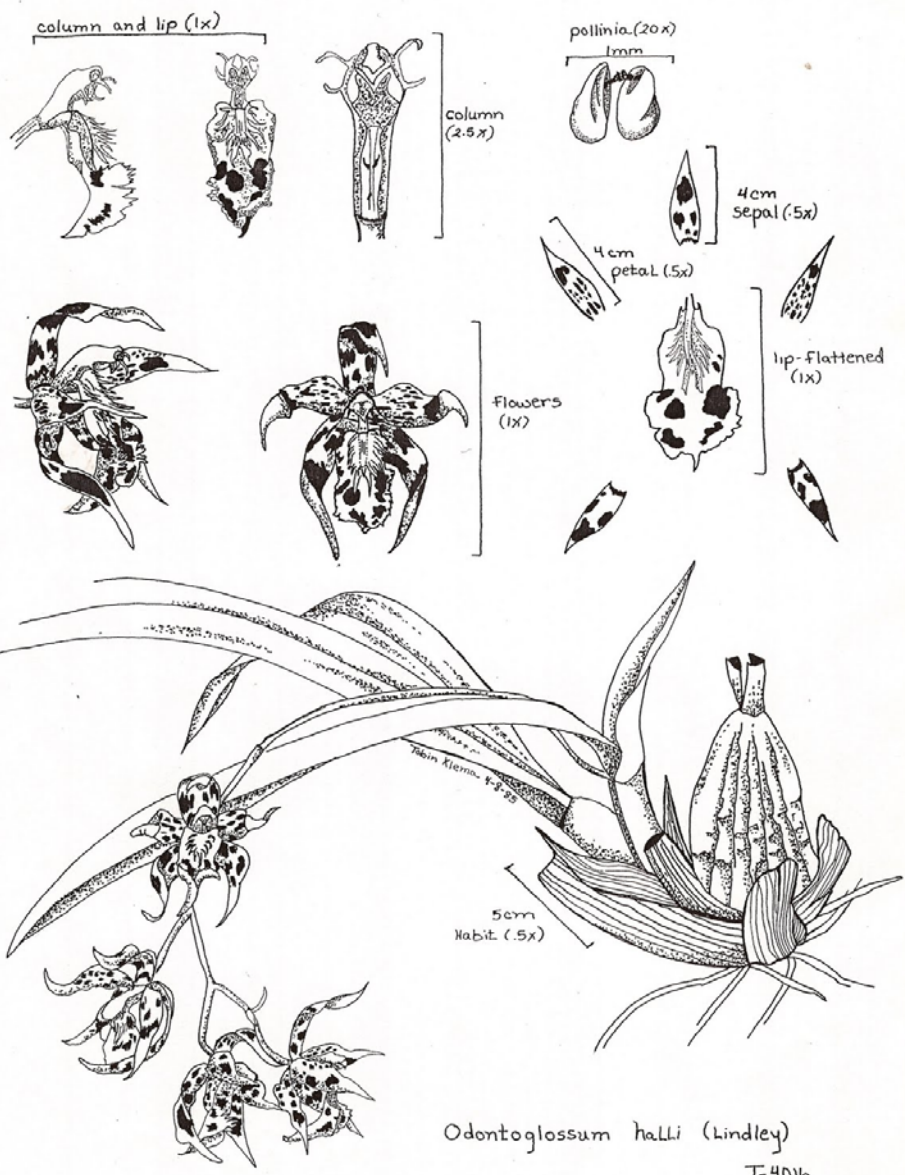


Headless Torso Self Portrait 2000 Alex Alien

Mark Rothko
Archaic Idol, 1945. Ink and gouache on paper, 55.6 x 76.2 cm.
The Museum of Modern Art, New York.

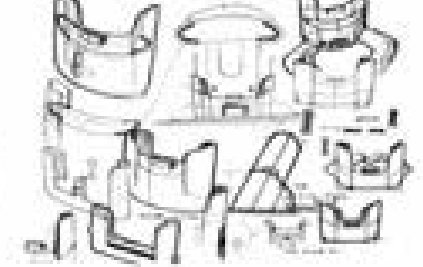
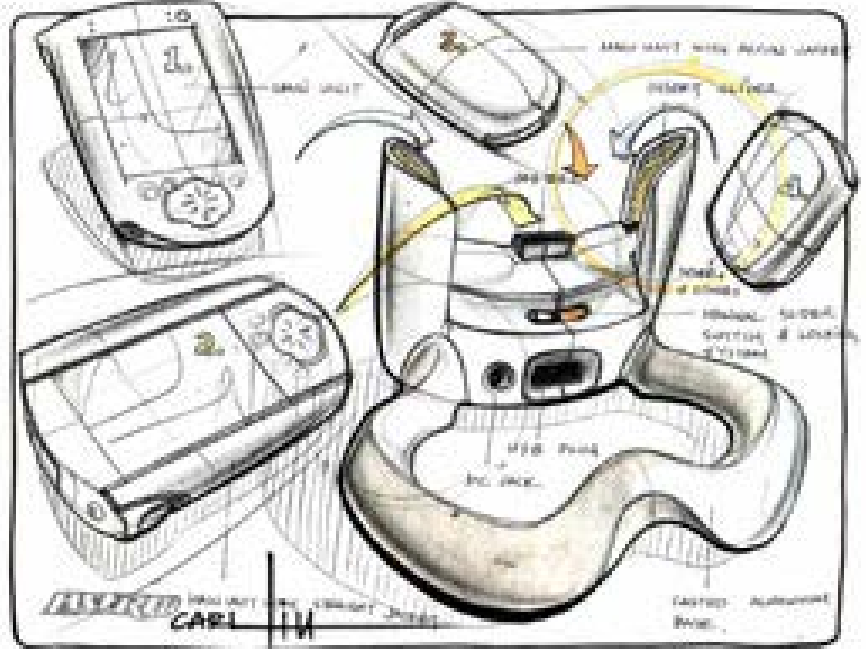
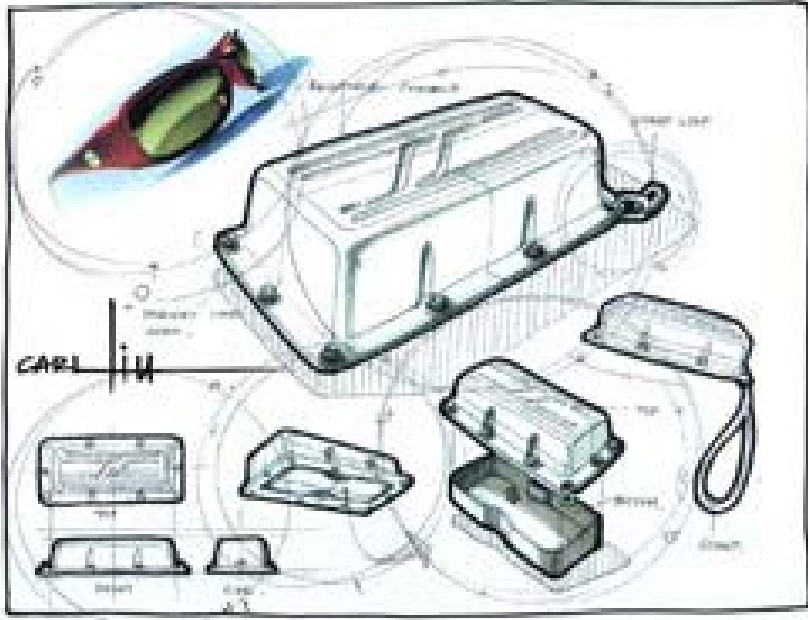
วาดเส้นกับสาขาวิชาต่างๆ

พฤกษศาสตร์ (Botanical Illustration/Drawing)

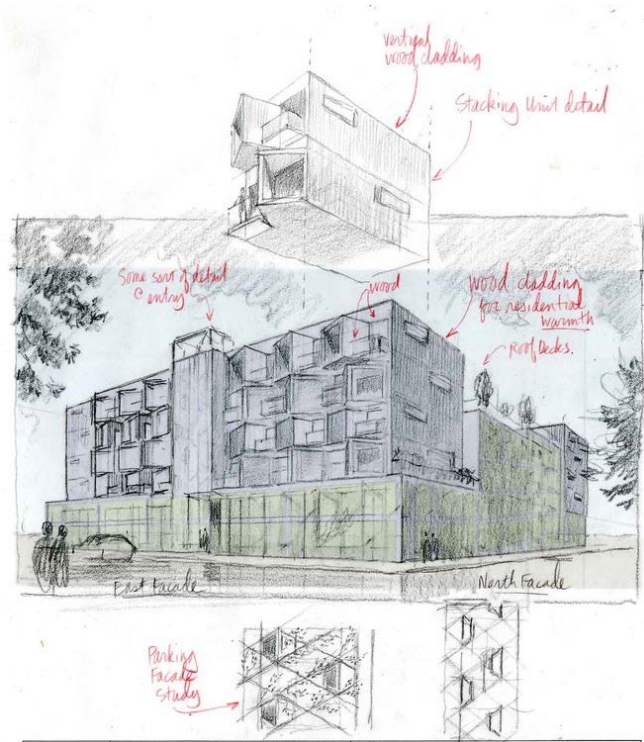
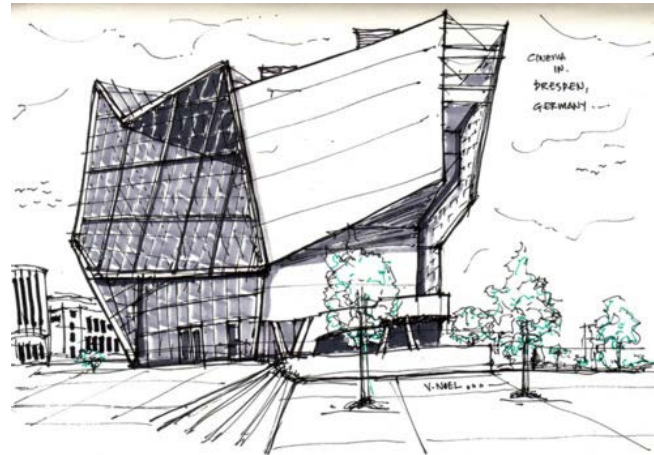
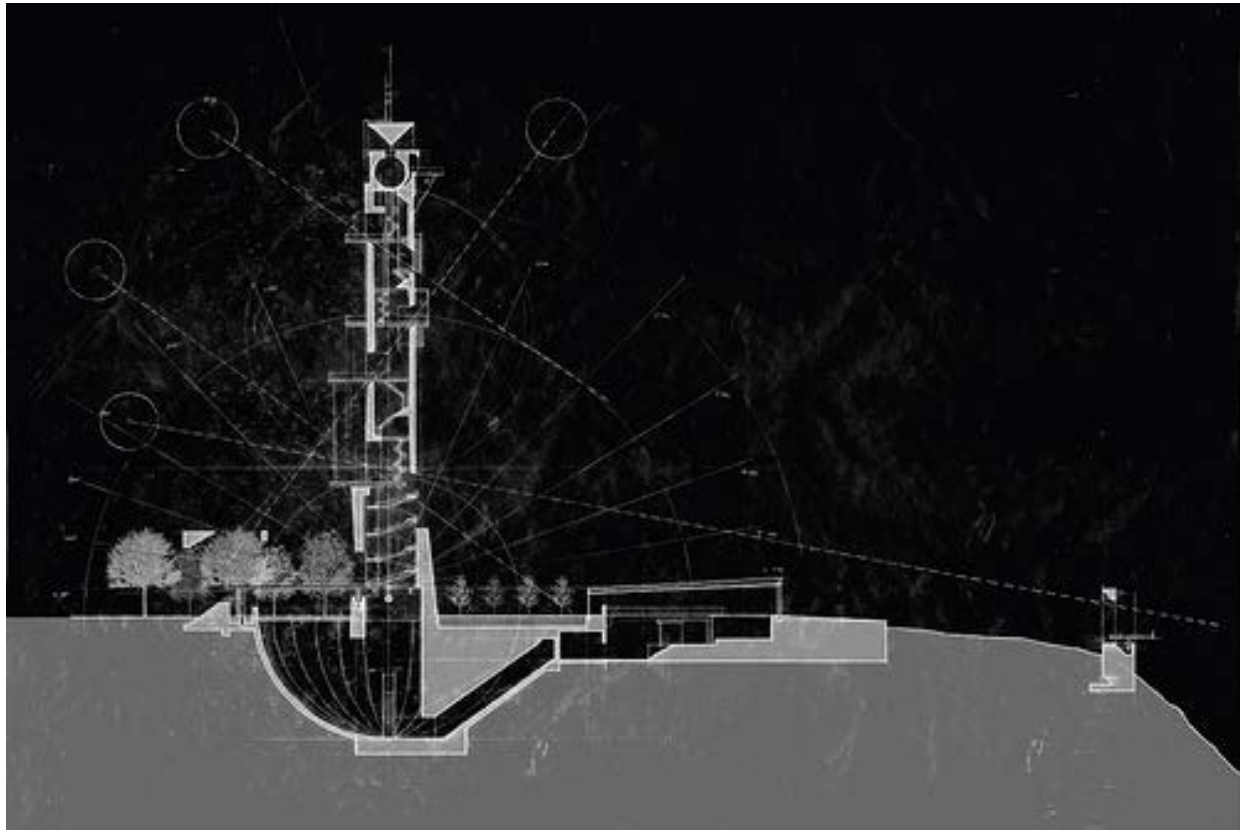


Odontoglossum halli (Lindley)
T-4016

ออกแบบออกแบบอุตสาหกรรม(Industrial Design)



สถาปัตยกรรมศาสตร์ (Architectural Drawing)



ออกแบบออกแบบเครื่องแต่งกาย(Fashion Design)



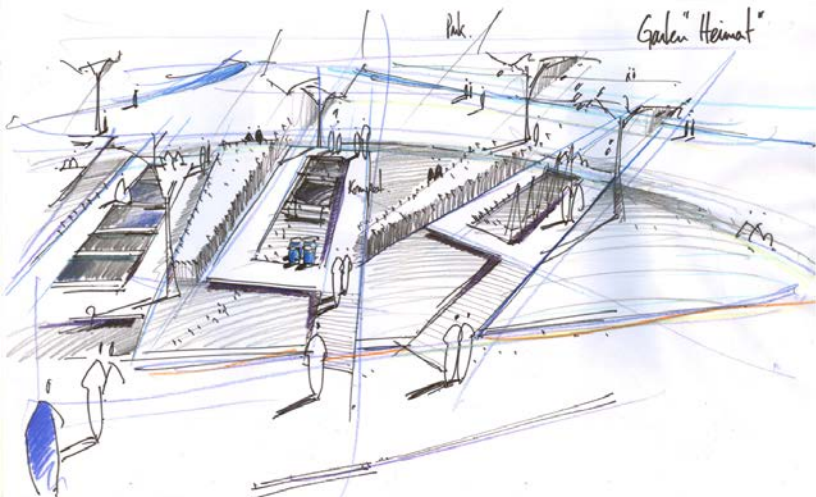
Yves Saint Laurent's original sketch



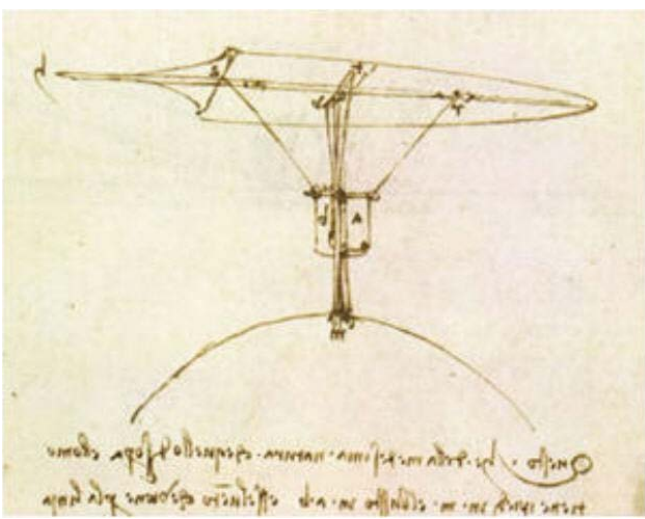
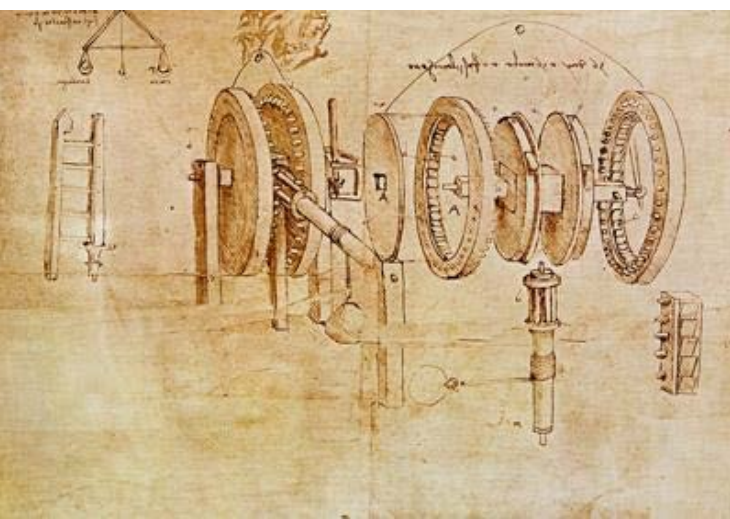
ภูมิสถาปัตยกรรม (Landscape Architectural Drawing)



Simon Hibbert's sketch



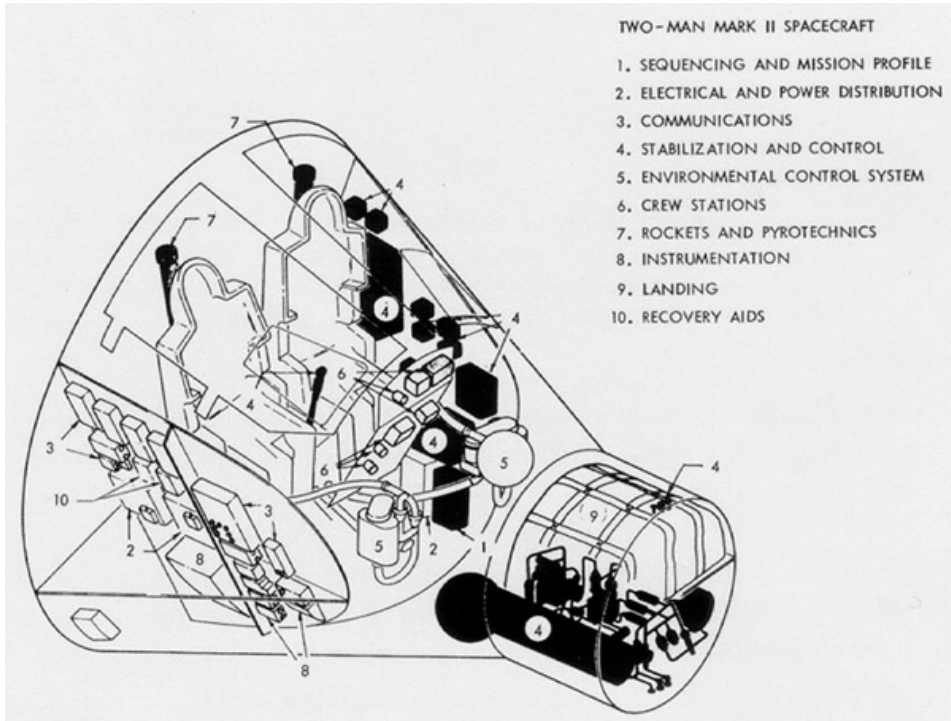
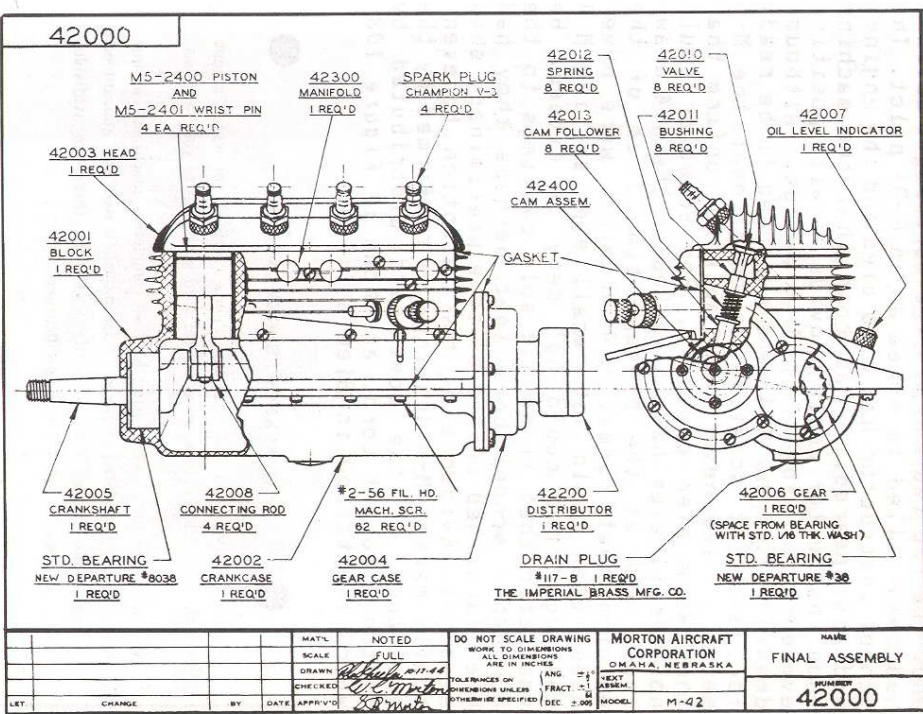
วิศวกรรมศาสตร์ (Engineering Drawing)



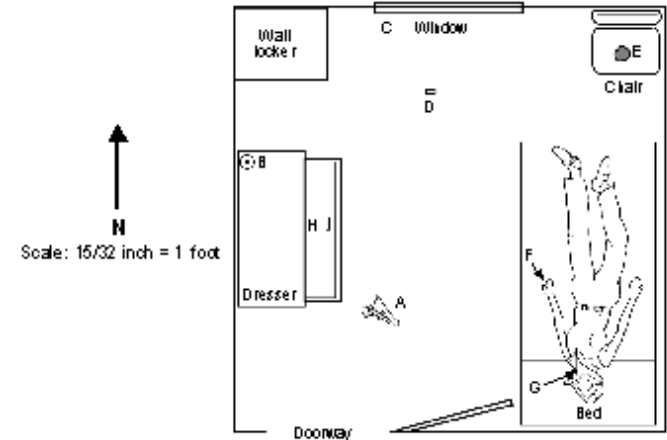
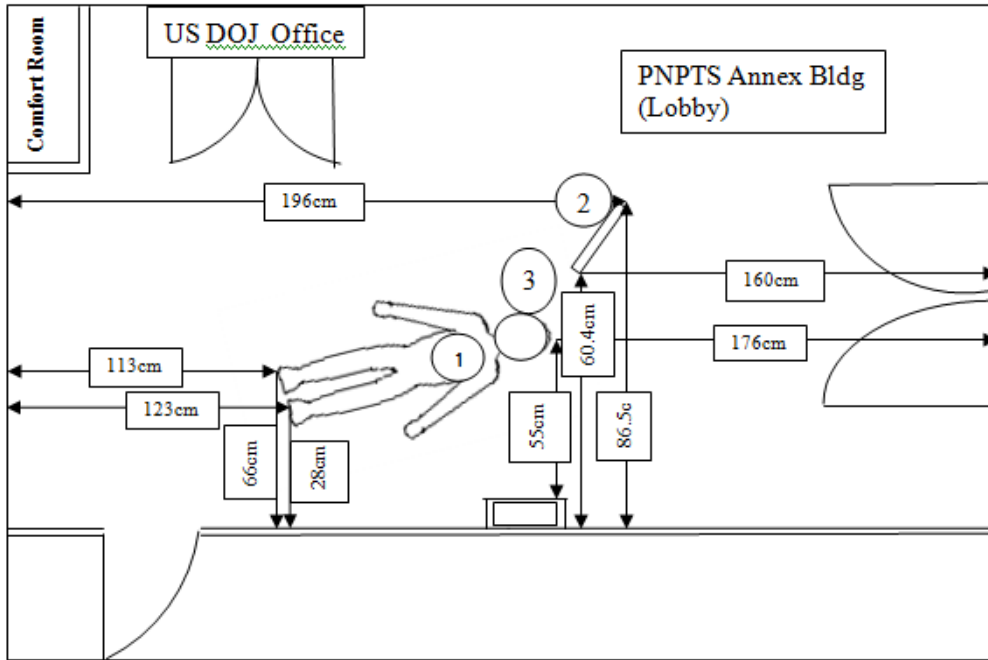
Leonardo Da Vinci –
Design for a Two-Wheeled Hoist
with a Caged Gear

Leonardo Da Vinci – Flying Machine/Glider

McDonnell-proposed two-man
Mercury spacecraft.
Shown is the interior arrangement
of spacecraft equipment July 27-28, 1961



อาชญวิทยา : ภาพสเกตช์คนร้ายและสถานที่เกิดเหตุ (Police and crime scene sketch)



- Legend
- A. Pistol
 - B. Bottle
 - C. Letters "BR"
 - D. Shell casing
 - E. Red stain
 - F. Fibers
 - G. Gunshot wound
 - H. Cigarette inside opened drawer

Title Block
 Case number: 063-02-4809
 Offense: Death investigation
 Scene portrayed: Room #7, Bldg 5-3251-B, troop billets
 Location: Fort Leonard Wood, MO
 Victim: SP4 Faye M. Miller
 Time & date began: 1000 12 Jan 02
 Sketched by: SA Tim C. Winkler
 Verified by: SGT Betty C. Goodwin

WANTED

BY THE
JANESVILLE POLICE DEPARTMENT
 308 North Jackson Street Janesville Wisconsin 53405

THIS SUSPECT IS BELIEVED TO BE RESPONSIBLE FOR A ROBBERY IN THE JANESVILLE AREA



SUSPECT INFORMATION

- Black Male, Mid 20's
- 5'07" to 5'11"
- 140-150lbs
- Bald
- Medium to dark skin tone
- Thin build

CLOTHING

- Dark blue or black colored style sweat type jacket and pants
- White stripe or writing on right sleeve
- Blue baseball style hat worn backwards

Suspects often attempt to change their appearance after a police search is released. Citizens are asked to be aware of anyone who suddenly attempts to change their appearance in any way.

ANYONE WITH INFORMATION REGARDING THIS CASE OR SUSPECT IS URGED TO CALL THE
JANESVILLE POLICE DEPARTMENT AT (608)755-3100
 OR
JANESVILLE AREA CRIME STOPPERS AT (608)756-3636.

"DO NOT PHOTO COPY OR FAX THIS IMAGE FOR A COPY CONTACT THE JANESVILLE POLICE DEPARTMENT"

DETECTIVE WANTED
 ASSIST UP

POLICE DEPARTMENT
 CITY OF NEW YORK

PLEASE POST IN A CONSPICUOUS PLACE

WANTED FOR HOMICIDE



The above is a sketch representing a suspect sought for a HOMICIDE that occurred on 1/27/98 at 1320 Ave. in the confines of the 28 pd. This sketch is based on a description supplied by a witness.

DESCRIPTION: MALE, BLACK, 20-25 YRS. OLD, 5'7"-5'9", 150-160 LBS., BRAIDED HAIR, LIGHT COMPLEXION, THIN MUSTACHE / BEARD, WEARING AN ORANGE / YELLOW 3/4 LENGTH JACKET.

ABOVE SUSPECT WITH AN ACCOMPLICE (MALE, BLACK, 20-25 YRS OLD) ENTERED LOCKER, ROBBED AND TIED UP VICTIMS AND SHOT RETIRED M.O.S. CAUSING HIS DEATH.

Note: the 28 PDS with any information regarding the above subject.
 File: SP4 SETH, CASE 898-115
 DET LUDWIG Assigned
 Telephone: 212 676-1020

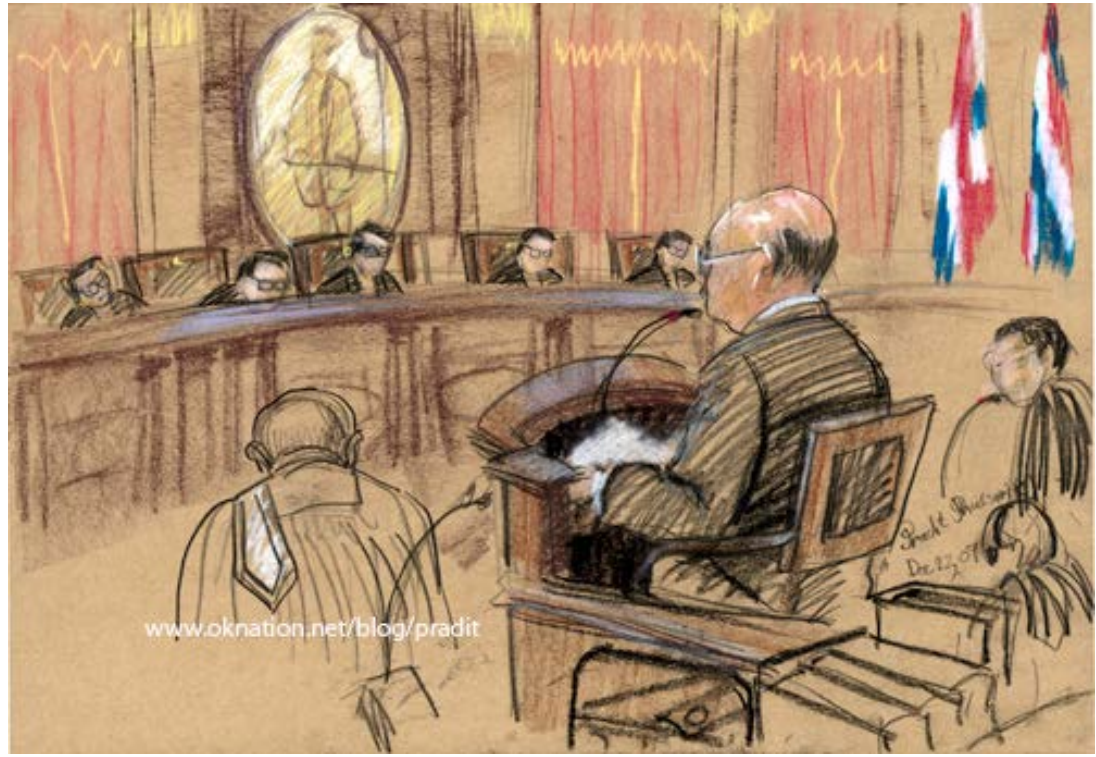
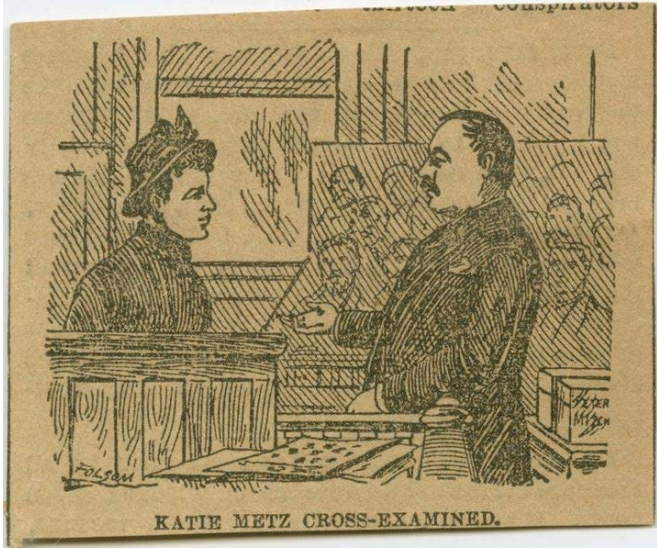
ARTIST CIRCULAR
 POLICE DEPARTMENT
 DATE PREPARED
 1/27/98

POLICE DEPARTMENT
 CITY OF NEW YORK

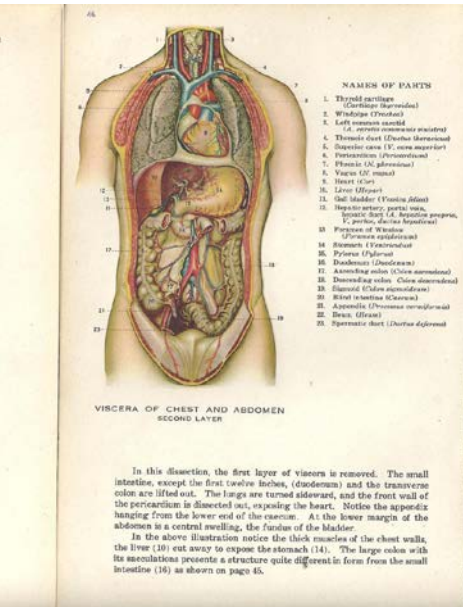
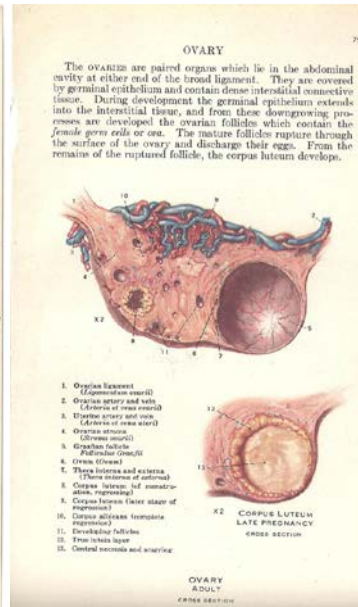
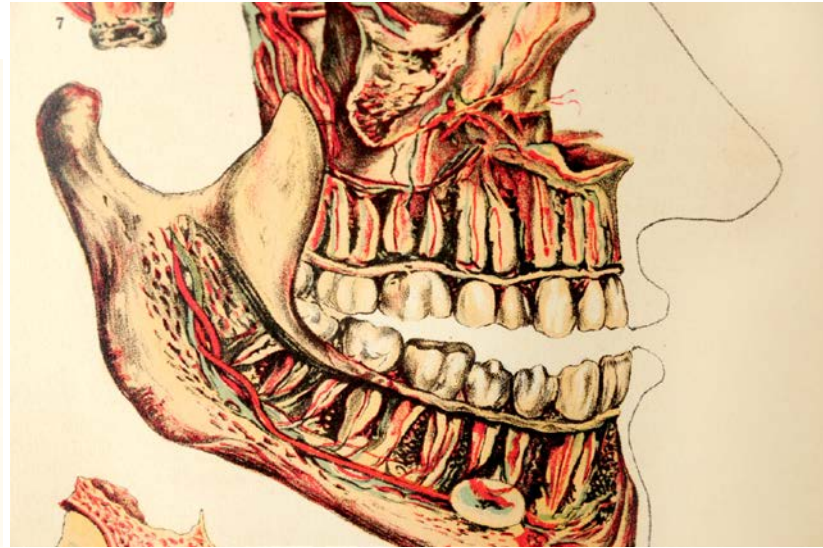
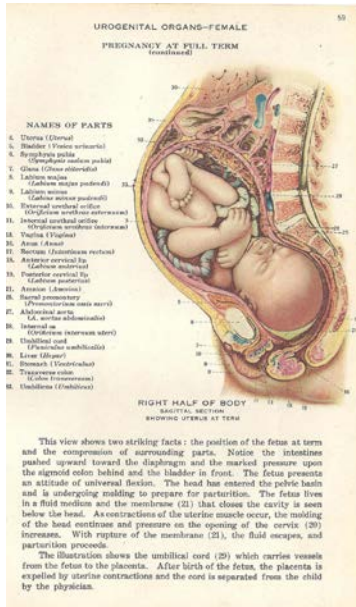
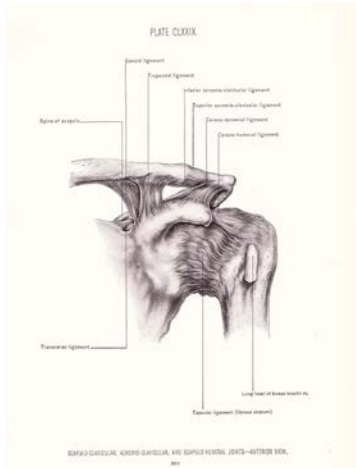
D 924



ข่าว : ภาพสเก็ตช์ในศาล (Courtroom Sketch)



แพทยศาสตร์ (Medical Anatomy Drawing)



โฆษณาและภาพยนตร์ : Storyboard

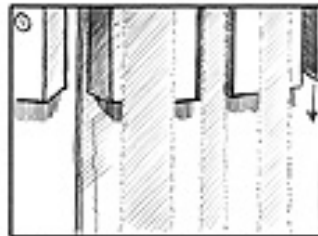
Johnny Hardstaff / RSA Films Ltd

orange paint / storyboard 1

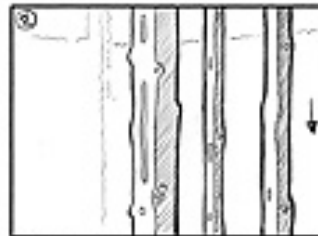
Board 004

Thoughts>

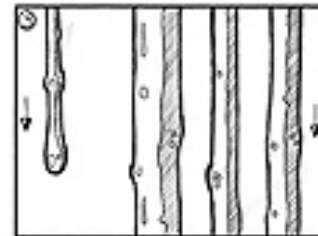
It might be a good idea to look at dissolves. Soft dissolves from shot to shot could be interesting. We should look at this. Clearly, as this is a 30, we need to be slow and measured. Having two cameras on the shoot will help a great deal in capturing more lovely moments. This storyboard is for reference only. Evidently it both is and is not too comprehensive. Two cameras will ensure a more interesting and flexible edit.



3- OUT OF FOCUS COLUMN OF PAINT - DETAIL VIEW SHOWN IN FOCUS - WALL BEHIND - CAMERA MOVING DOWN SLOWLY -



FOCUS PULL - 3- CONTINUING SLOWLY - CAMERA MOVING DOWN SLOWLY -



CAMERA MOVING DOWN SLOWLY - FOCUS COLUMN OF PAINT SHOWN IN FOCUS -



CAMERA MOVING DOWN SLOWLY - WE ENCOUNTER 'BODY' OF FULL GUNGE COLUMN -



CAMERA MOVING DOWN SLOWLY - WE SEE PAINT TOUCH FROM ABOVE -



WE CUT TO PAINT - LOOKING DOWN FROM ABOVE - DISCOVERING PAINT - CAMERA MOVING DOWN TO TOUCH WITH IT -



WE CUT BACK TO PAINT TOUCHING - SPECIFICALLY INSIDE FROM ABOVE - CAMERA MOVING DOWN - POINTING UP ?



CAMERA MOVING DOWN SLOWLY - FROM ABOVE -



WE CUT TO WIDE - BUT STILL REMEMBER THAT - CAMERA FURTHER IMPROVEMENT MOVING BACK -



WE CUT TO THE WATER GUNGE SPOT - AT THE END THIS - GO IN DISCOVERING THAT HANDS ON THE SPOT - VISUALS AND DETAILED - CAMERA MOVING DOWN -



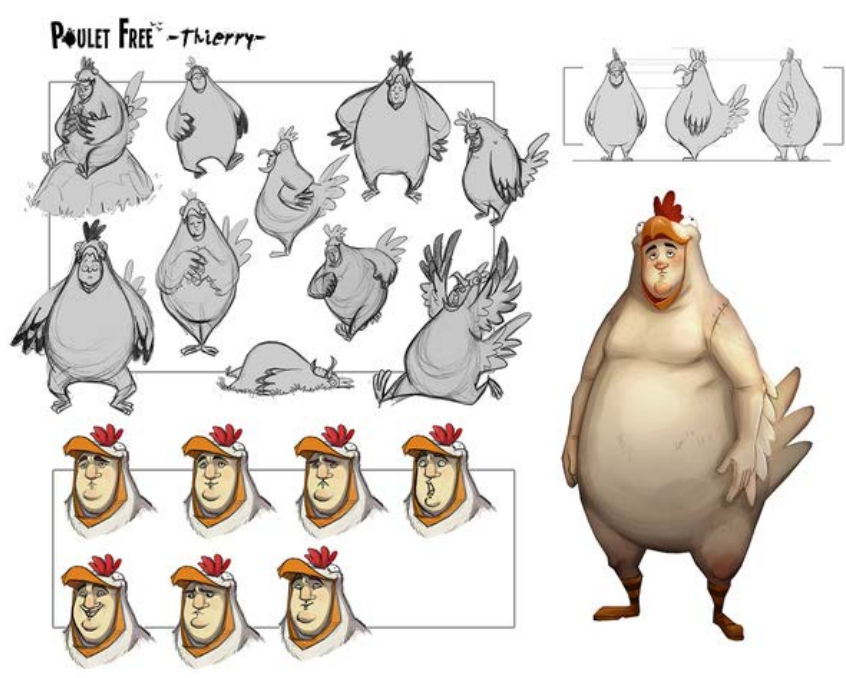
WE CUT TO FIND THE PAINT ON THE WATER GUNGE SPOT AS IT VIBRATES - CAMERA IS NOT MOVING DOWN - BUT REFLECTED IN PAINT - DEEP ON SPOT IS 'TAPER FROM ORANGE ENVIRONMENT - NOT DISAPPEARING?' - DROP BEING FORMING - LOWLY WATER MOVING - 'WIDE BLACK - FULL FOCUS FROM GUNGE SPOT TO PAINT TOUCH -



WE CUT TO WIDE - CAMERA PULLING BACK - PERCEPTIBLE - NOTE - SLOWLY WOULD NOW -

It's important that we select one colour to take us on our macro journey. It is this colour that leads us to encounter the rest. Important that we do not see any paint spill immediately. It should be a reward. **IMPORTANT** - Please note - I like to frame in camera - Not in advance Drawings for vague reference only

Character Design



วรรณกรรม : ภาพประกอบ (Illustration)



Staring Girl



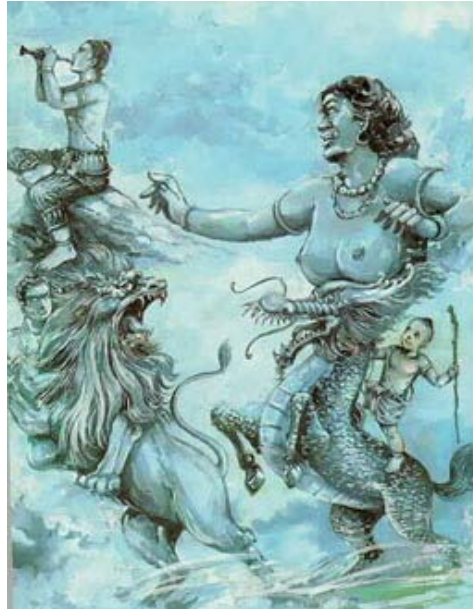
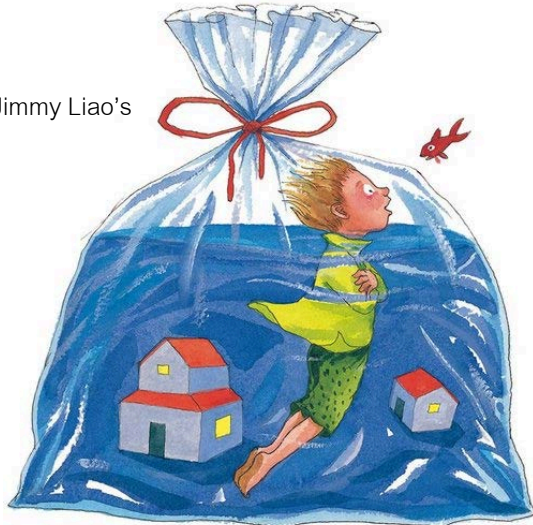
who would just stand there and stare. At anyone or anything. She seemed not to care



She stood there and stared, and



Jimmy Liao's



ตัวอย่าง : วิธีการและรูปแบบผลงานวาดเส้นในงานทัศนศิลป์

Tom Marioni



Out-of-Body Free-Hand Circle

2007/2009

Installation view at the Solomon R. Guggenheim Museum, New York.

Susan Turcot



The Future for Less #1

Pencil on paper on aluminum, 29.8 x 42.5 cm.

Susan Turcot



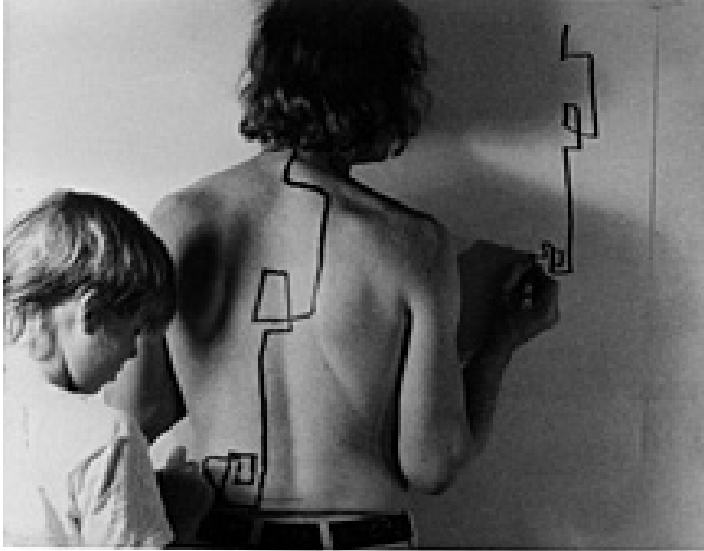
The Future for Less #3

Pencil on paper on aluminum, 29.8 x 42.5 cm.

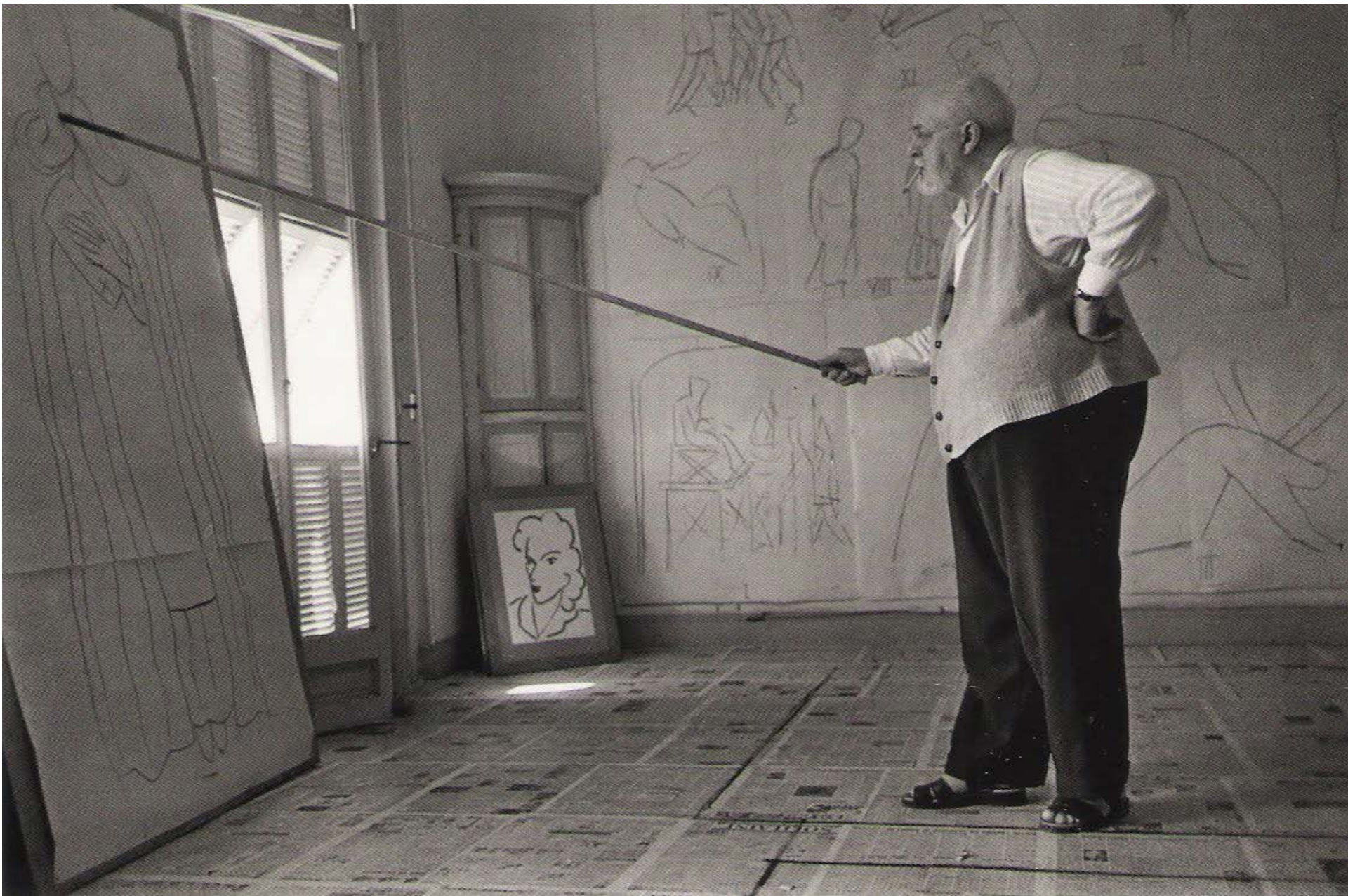
Dennis Oppenheim

"Two Stage Transfer Drawing", 1971

<http://www.dennis-oppenheim.com/works/1971/153>



Henri Matisse



Drawing with a bamboo pole tipped with charcoal, Cimiez (Nice), August 1948



Sojourn Installation Image- Gallery 2. This Image features (from left to right):

Chair, 2008, Papier-mâché with glass glitter, Dimensions Unknown.

Untitled (Flower Blanket), 1992, Nepal paper, Dimensions Unknown.

Coming Forth, 2008, Collage and ink on Nepal paper,

Tethered, 2009, Ink on Nepal Paper, Dimensions Unknown

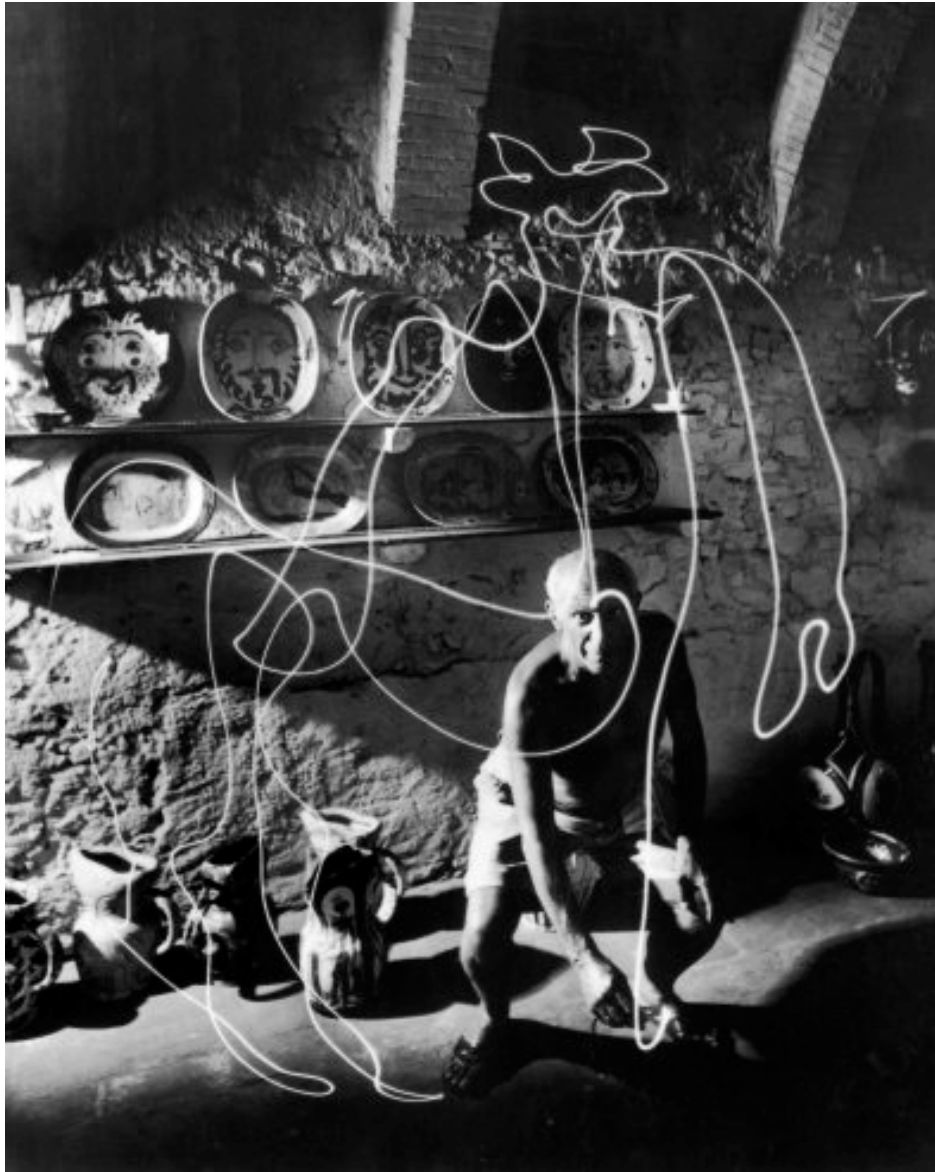


Sojourn Installation Image- Gallery 3.

This Image features:

Her Bouquet, 2007-2008, Ink on Nepal paper with glass glitter, lithographic crayon and silk tissue; oil paint on mouth-blown clear antique glass with white and yellow gold leaf, Work on Nepal 1: Work on Nepal 2: Glass panels
Light Bulbs, 2008, Papier-mâché, tooth picks, gold leaf, silver leaf, mica and glass glitter, Bulbs.

Pablo Picasso



Photograph by Gjon Mili
"Draws" a centaur in the air with light, 1949

Claire Oswalt : Peril in Perfection, สื่อผสม(Mixed Media)



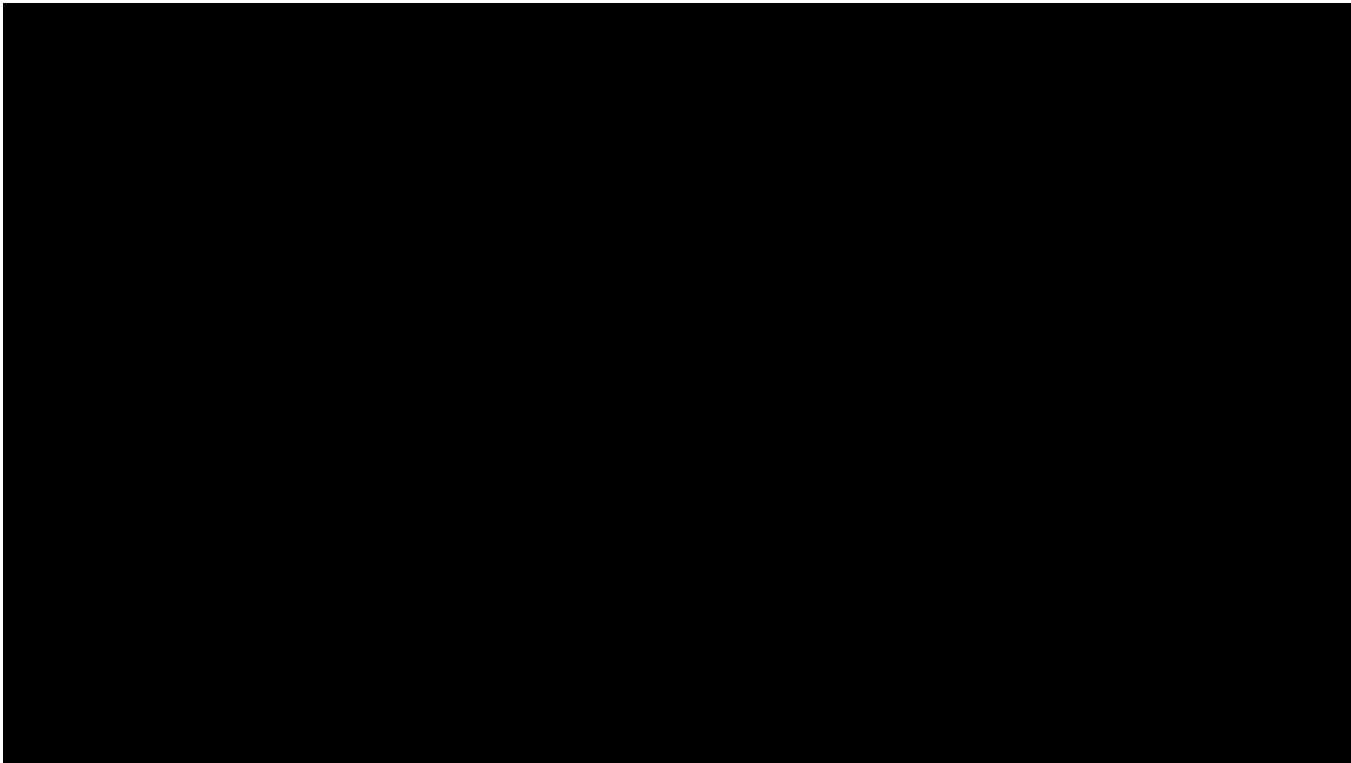
Laying into you_II ,2009



Camel clutch , 2009



Cai Guo-Qiang, Gunpower Drawing



David LaFerriere : อาหารกลางวันของลูก ๆ





Drawing Machine. Wood, metal, concrete, vinyl, ballpen. 650 x 650 x 300 cm

Tim Knowles



<http://www.timknowles.co.uk>



Trans-Alp project, Installation view Zero Gallery



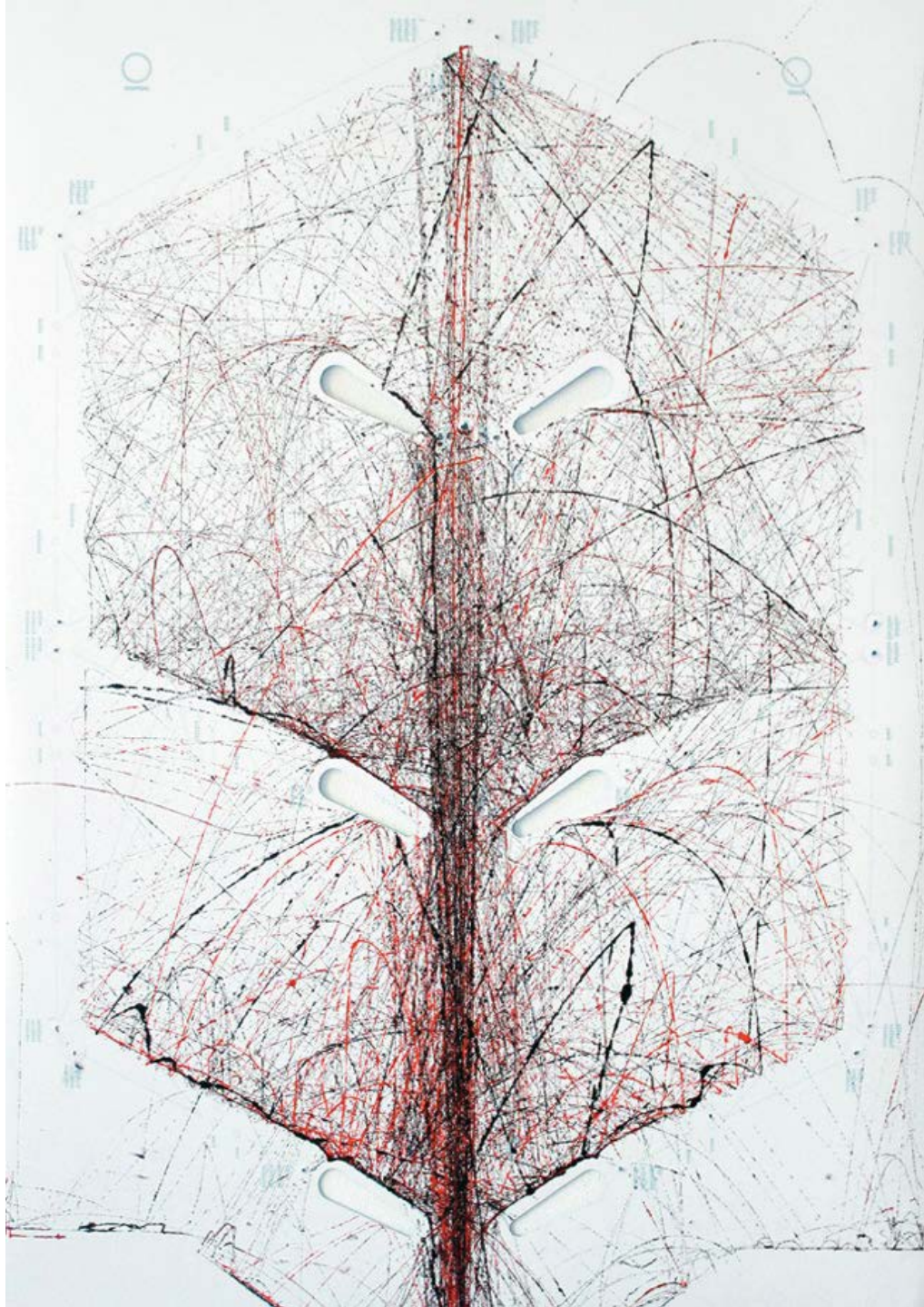
4 Panel Weeping Willow 2006



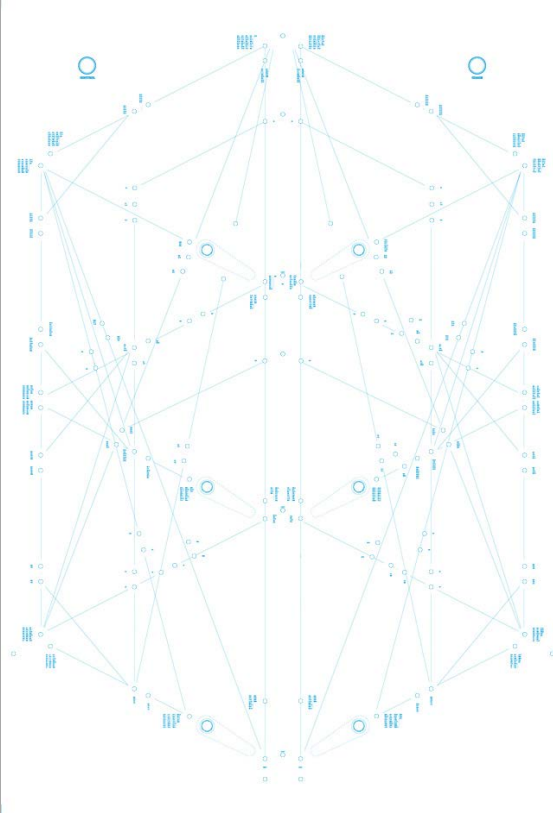
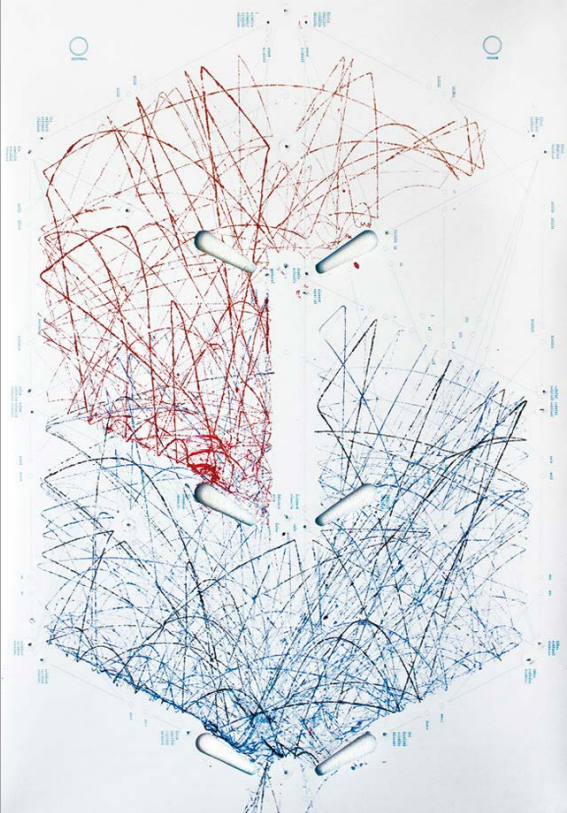
Ink on paper on panel [archival quality] plus projected 6 min looped DVD

4800 x 2200mm + projection [size variable]

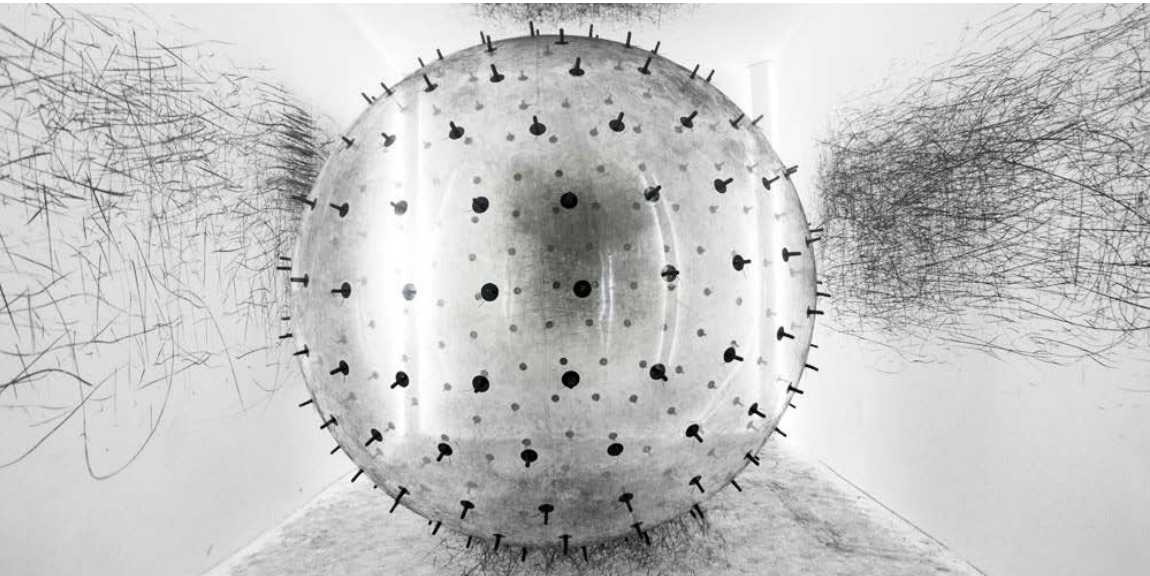
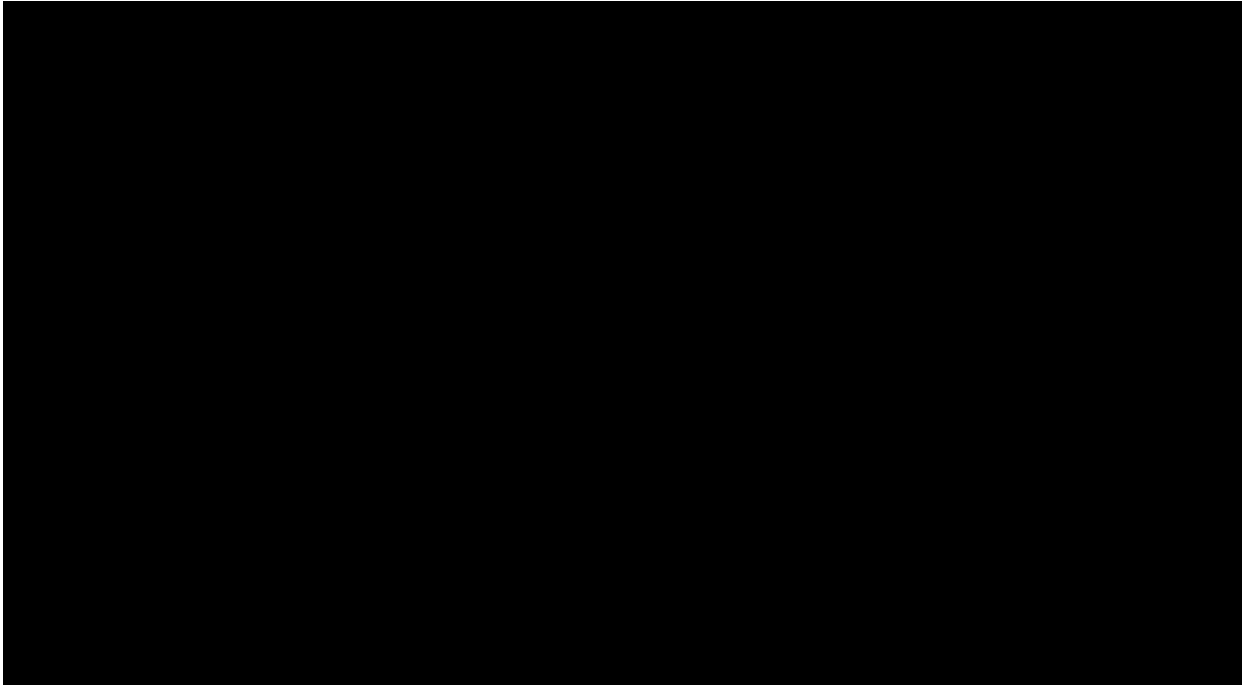
Sam Van Doorn



Sam Van Doorn : STYN



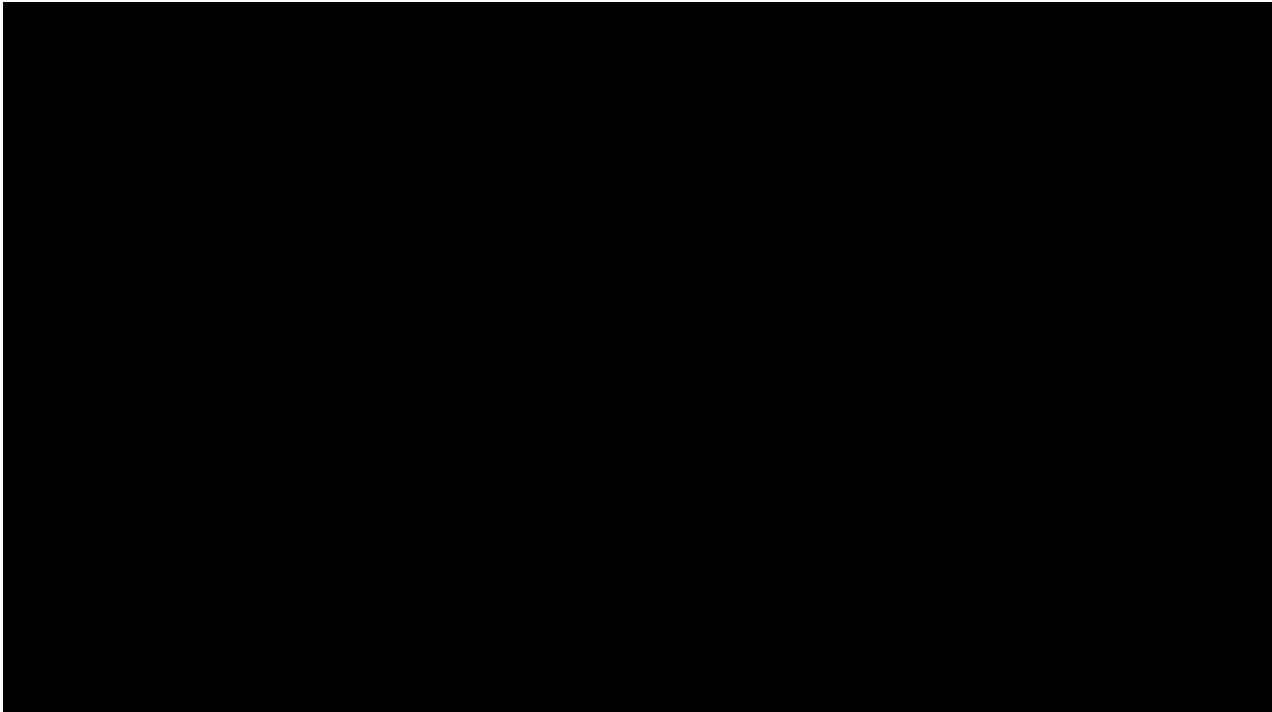
Karina Smigla-Bobinski : Installation



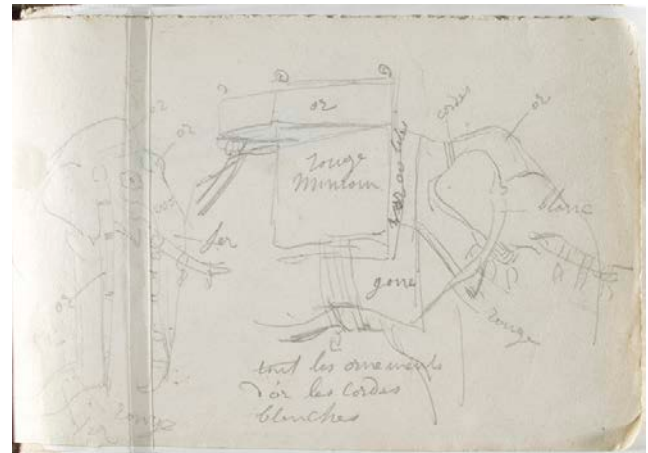
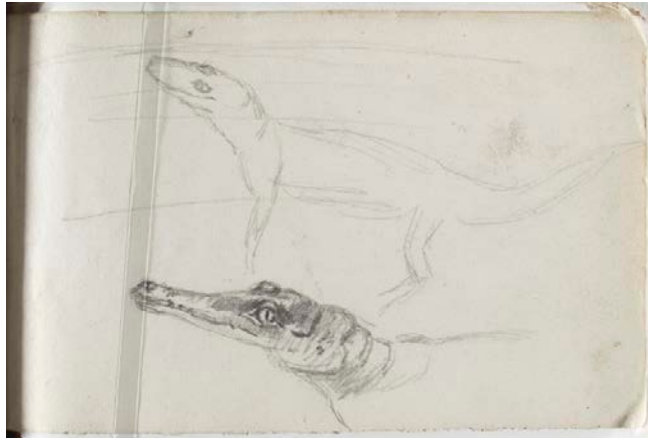
ADA - analog interactive installation / kinetic sculpture /
post-digital drawing machine, 2010

Tony Orrico : Penwald Drawings,Performance

Photo by Michael Hart



สมุดสเกตช์(Sketch Book)



Antoine-Louis Barye, 1796-1875

สมุดสเกตช์(Sketch Book)

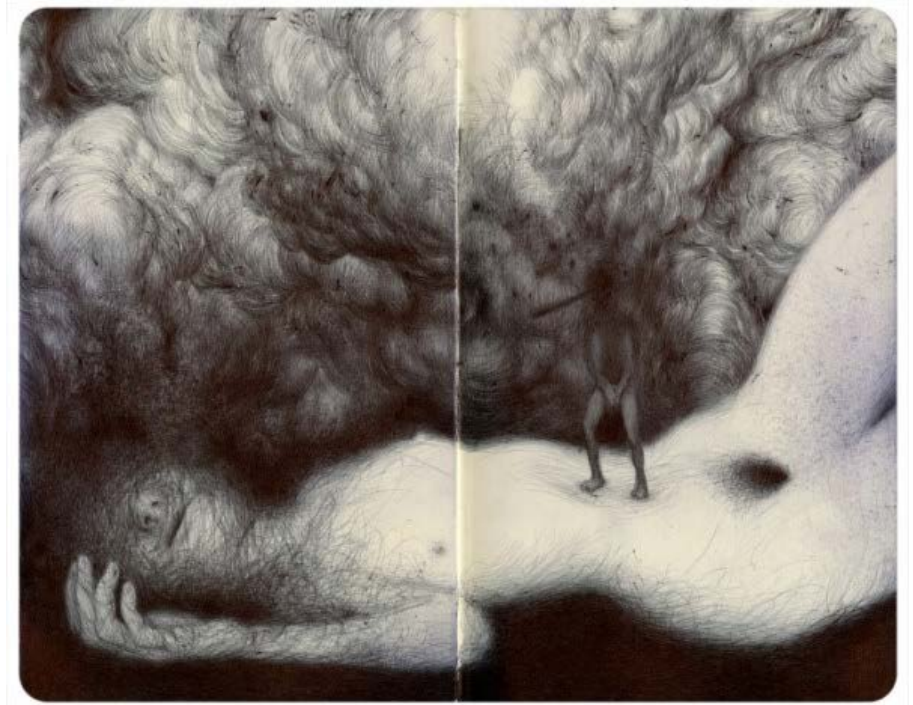
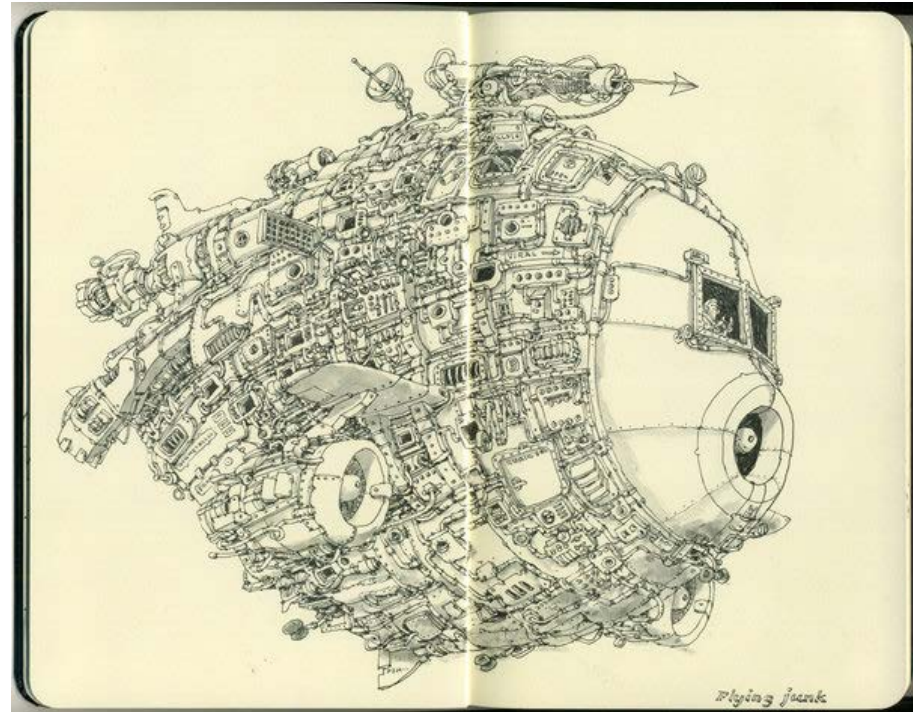


Sirpa Varis



Ana Mouyis

สมุดสเกตช์(Sketch Book)

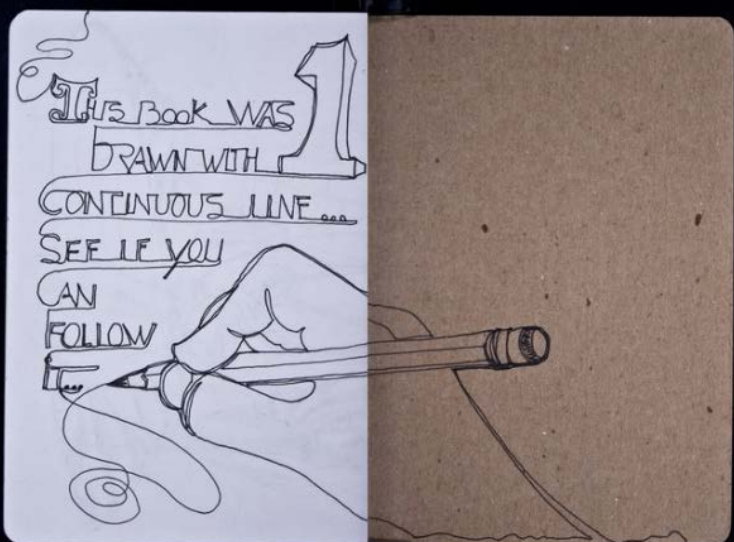


สมุดสเกตซ์ (Sketch Book)



Linyu Yen

Pamela Wilburn



วาดเส้นคืออะไร?



